



INCREASE IN ELECTRICITY PRICE PER KWH FOR THE MONTH OF APRIL

This public notice is issued by the Utilities Regulatory Authority in accordance with paragraph 12(1)(c) of the *Utilities Regulatory Authority Act No.11 of 2007* (as amended).

It serves to inform UNELCO’s electricity customers that in accordance with the Terms and Conditions of the Port Vila Electricity Concession Contract, Port Vila’s electricity tariff is adjusted monthly via a monthly tariff adjustment formula defined by the contract to cater for changes in certain types of costs that are beyond UNELCO’s control, yet UNELCO incurs such costs to provide electricity service. These costs are represented by indexes in the monthly price adjustment formula.

Accordingly, since the last billing of March 2022 at 57.63 VT/kWh, the electricity price is adjusted upwards by 4.25 % or + 2.45 VT/kWh. This increase in adjustment was largely due to an increase in the monthly average imported diesel fuel price/litre by 10.71 % in mid-March 2022 from February 2022 price/litre.

There are seven (7) indexes in the adjustment formula that are adjusted every month. Despite the decrease observed in foreign exchange rate, material index and the Power Purchasing Agreement (PPA) price, the April tariff experienced an increase in overall due to the imported diesel fuel cost that makes up approximately 40% of the electricity price, other indexes like, demand from the last prevailing 12 months and the proportion of power generated from diesel also increased within the month.

Customers should expect the electricity tariff per kWh for April 2022 to increase by 4.25 % to 60.08VT/kWh as shown in table below.

Month	Adjusted Tariff	Change from Prev. Monthly Price (in % & VT/kWh)
March 2022	57.63 VT/kWh	-0.74% or - 0.43 VT/kWh
April 2022	60.08 VT/kWh	+4.25% or + 2.45 VT/kWh

The Authority will continue to monitor, verify, and approve monthly UNELCO’s electricity price change to ensure the adjusted prices comply with its (UNELCO’s) concession contract. The approved tariff is sent monthly to the State Law office for gazettal, to become an official publication to the public and application to customer electricity invoices.

The above outline rate is applied differently to the various customer types of UNELCO via the applicable customer tariff structure (refer to page 3).

Customers are reminded to always manage their electricity consumption by using energy efficient appliances and exercise other electricity saving measures to save on their monthly electricity bills. Current global fuel prices are expected to increase due to the ongoing conflict between Russia and Ukraine impacting the world fuel market and thus customers should expect gradual increase in the electricity price as a result in the coming months. The current lockdown that has shut down businesses or limited business operational hours may lead to a decline in the electricity demand which in turn may increase the monthly electricity prices.

Electricity Bill Comparison based on April 2022 Monthly Adjusted Price

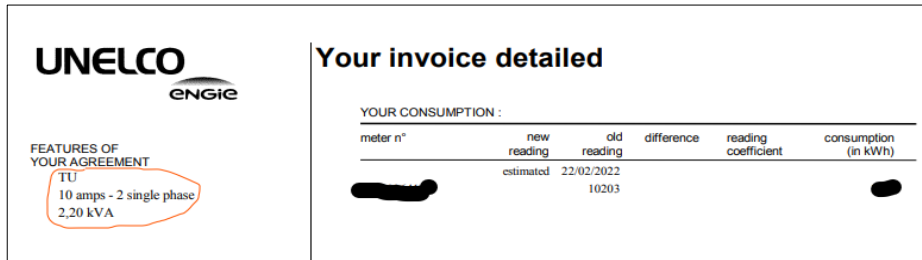
Provided in the table below is a list of UNELCO’s primary customer categories, customer subscription and electricity consumption (in kWh) assumed to calculate typical customer bills (taxes excluded) based on April’s revised electricity price and make comparisons with the last month’s adjusted electricity price. Such assumptions and comparisons will be utilized going forward. UNELCO’s electricity tariff structure is also provided in the page 3 for convenience.

Customer Categories	kWh Consumption	kVA Subscription	Variable Charge (kWh)	Fixed Charge (kVA)	Total Bill (April Price)	Total Bill March Price – (Variable + Fixed Cost)
“Small Domestic Customers” (PCD)*	56 kWh	2.2 kVA	1,144 Vatu	N/A	1,144 Vatu	1,098 Vatu
“Other Low Voltage Users” (TU)	200 kWh	4.4 kVA	14,540 Vatu	1,322 Vatu	15,862 Vatu	15,214 Vatu
“Business Licence Holders – Low Voltage” (TUP)	900 kWh	12.0 kVA	47,043 Vatu	14,419 Vatu	61,462 Vatu	58,957 Vatu
“High Voltage Tariff” (MT)	20,000 kWh	100.0 kVA	841,200 Vatu	150,200 Vatu	991,400 Vatu	951,075 Vatu

N/A – Not Applicable

* The PCD customer tariff structure is a progressive tariff structure with 3 different tiers. For 30 billing days, the allocations of kWh into the 3 tiers are as detailed in UNELCO’s customer tariff structure below including the different rates applied per tier. The allocations into the 3 different tiers are subject to change based on the number of billing days.

To identify what customer category and subscription you come under, on the second page of your electricity invoice, you can detect these details as shown in snapshot below. The acronyms in the details identify what customer category you come under and is reflected in UNELCO’s customer tariff structure below.



Customers are free to contact the Authority using the contact details below for any queries they may have in respect to this press release.

The Authority contact details are:

Utilities Regulatory Authority
 VNPF Investment Building |Rue Andre Ballande| Port Vila
 PMB: 9093 | Phone: 23335 | Email: info@ura.gov.vu

ELECTRICITY TARIFFS

Month of April 2022

BASE RATE P= 60,08 Vatu/kWh

A - (B*) - "SMALL DOMESTIC CONSUMERS" TARIFF (PCD)

Low voltage consumers 5 or 10 amps single phase for a maximum consumption of 120kWh per month

a) Electricity consumed	1st block	up to 60 kWh	0,34 x P =	20,43	Vatu/kWh
	2nd block	from 61 to 120 kWh	1,21 x P =	72,70	Vatu/kWh
	3rd block	over 120 kWh	3 x P =	180,24	Vatu/kWh

b) Fixed charge NONE

c) Security deposit flat rate : 70 x P = 4206 VATU

B - (D*) - "BUSINESS LICENCE HOLDERS - LOW VOLTAGE" TARIFF (TUP)

a) Electricity consumed Flat rate 0,87 x P = 52,27 Vatu/kWh

b) Fixed charge 20xP per subscribed kVA 1201,60 x kVA

c) Security deposit 150xP per subscribed kVA 9012 x kVA

C -(T*) - "SPORTS FIELDS" TARIFF (T)

a) Electricity consumed Flat rate 1,00 x P = 60,08 Vatu/kWh

b) Fixed charge NONE

c) Security deposit NONE

D (E*) - "PUBLIC LIGHTING" TARIFF (EP)

a) Electricity consumed Flat rate 0,54 x P = 32,44 Vatu/kWh

b) Fixed charge NONE

c) Security deposit NONE

E (A*) - "OTHER LOW VOLTAGE USERS" TARIFF (TU)

a) Electricity consumed Flat rate 1,21 x P = 72,70 Vatu/kWh

b) Fixed charge 5xP per subscribed kVA 300,40 x kVA

c) Security deposit 150xP per subscribed kVA 9012 x kVA

F (F*) - "HIGH VOLTAGE" TARIFF (MT)

a) Electricity consumed Flat rate 0,70 x P = 42,06 Vatu/kWh

b) Fixed charge 25xP per subscribed kVA 1502,00 x kVA

c) Security deposit 150xP per subscribed kVA 9012 x kVA